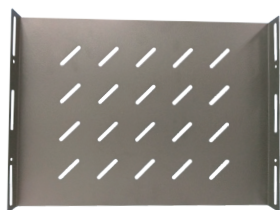


Accessories

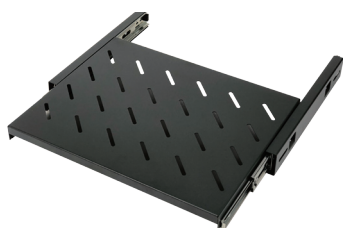
for Wall Mount Rack Cabinet



- Use for supporting equipment
- Materials: SPCC cold rolling steel

Fixed Shelf

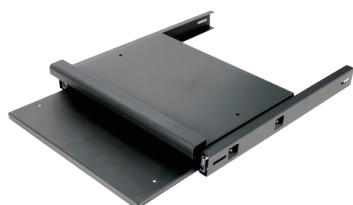
Model	Width	Depth	Description
RSP-045WM	485mm	275mm	80KG loading fixed shelf plate for 450mm depth cabinet
RSP-060WM	485mm	430mm	80KG loading fixed shelf plate for 600mm depth cabinet
RSP-080WM	485mm	630mm	80KG loading fixed shelf plate for 800mm depth cabinet



- Use for supporting equipment
- Materials: SPCC cold rolling steel

Sliding Shelf

Model	Width	Depth	Description
RSS-060WM	485mm	430mm	50KG loading sliding shelf plate for 600mm depth cabinet
RSS-080WM	485mm	630mm	50KG loading sliding shelf plate for 800mm depth cabinet



- Use for supporting equipment
- Materials: SPCC cold rolling steel

Keyboard Mouse Plate

Model	Width	Depth	Description
RKP-060WM	485mm	430mm	50KG loading keyboard mouse plate for 600mm depth cabinet
RKP-080WM	485mm	630mm	50KG loading keyboard mouse plate for 800mm depth cabinet



- Input: 220VAC / 110VAC
- Materials: SPCC cold rolling steel

AC Fan

Model	Width	Fan Unit	Description
RFN-02F	19" Mounting	2	1U Rack cabinet dual AC fan
RFN-04F	19" Mounting	4	1U Rack cabinet quad AC fan



- Use for supporting equipment
- Materials: SPCC cold rolling steel

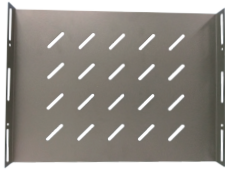
L Guide Rail

Model	Length	Description
RLG-045WM	275mm	Suitable for 450mm depth cabinet
RLG-060WM	430mm	Suitable for 600mm depth cabinet
RLG-080WM	630mm	Suitable for 800mm depth cabinet

SPECIFICATIONS SUBJECT TO CHANGE WITHOUT NOTICE.

Accessories

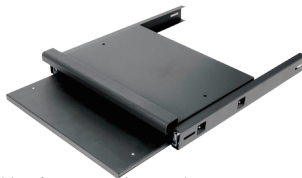
for Standard / Heavy Duty Rack Cabinet



- Use for supporting equipment
- Materials: SPOC cold rolling steel



- Use for supporting equipment
- Materials: SPOC cold rolling steel



- Use for supporting equipment
- Materials: SPOC cold rolling steel



- Input: 220VAC / 110VAC
- Materials: SPOC cold rolling steel



- Use for supporting equipment
- Materials: SPOC cold rolling steel



- Materials: SPOC cold rolling steel



- Baying kit for heavy duty series



- Materials: Nickel Galvanized

Fixed Shelf

Model	Width	Depth	Description
RSP-060SH	470mm	350mm	80KG loading fixed shelf plate for 600mm depth cabinet
RSP-080SH	470mm	550mm	80KG loading fixed shelf plate for 800mm depth cabinet
RSP-100SH	470mm	750mm	80KG loading fixed shelf plate for 1000mm depth cabinet
RHP-080SH	470mm	550mm	150KG loading fixed shelf plate for 800mm depth cabinet
RHP-100SH	470mm	750mm	150KG loading fixed shelf plate for 1000mm depth cabinet

Sliding Shelf

Model	Width	Depth	Description
RSS-060SH	470mm	350mm	50KG loading sliding shelf plate for 600mm depth cabinet
RSS-080SH	470mm	550mm	50KG loading sliding shelf plate for 800mm depth cabinet
RSS-100SH	470mm	750mm	50KG loading sliding shelf plate for 1000mm depth cabinet

Keyboard Mouse Plate

Model	Width	Depth	Description
RKP-060SH	470mm	370mm	50KG loading keyboard mouse plate for 600mm depth cabinet
RKP-080SH	470mm	570mm	50KG loading keyboard mouse plate for 800mm depth cabinet
RKP-100SH	470mm	770mm	50KG loading keyboard mouse plate for 1000mm depth cabinet

AC Fan

Model	Width	Fan Unit	Description
RFN-02F	19" Mounting	2	1U Rack cabinet dual AC fan
RFN-04F	19" Mounting	4	1U Rack cabinet quad AC fan

L Guide Rail

Model	Length	Description
RLG-060SH	350mm	Suitable for 600mm depth cabinet
RLG-080SH	550mm	Suitable for 800mm depth cabinet
RLG-100SH	750mm	Suitable for 1000mm depth cabinet

Cable Manager (Vertical)

Model	Height	Width	Depth	Description
RMV-42UH	42U	95mm	80mm	Cable management for heavy duty cabinet

Interlock Bracket

Model	Description
RLB-01	Rack cabinet interlock bracket

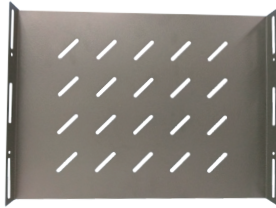
Cable Ring

Model	Height	Width	Description
RCR-45	75mm	45mm	Cable Ring use for Heavy Duty Series

SPECIFICATIONS SUBJECT TO CHANGE WITHOUT NOTICE.

Accessories

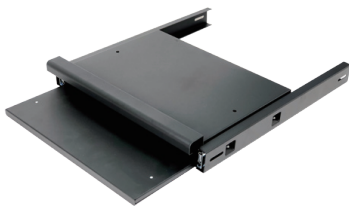
for Server Rack Cabinet



- Use for supporting equipment
- Materials: SPCC cold rolling steel



- Use for supporting equipment
- Materials: SPCC cold rolling steel



- Use for supporting equipment
- Materials: SPCC cold rolling steel



- Input: 220VAC / 110VAC
- Materials: SPCC cold rolling steel



- Use for supporting equipment
- Materials: SPCC cold rolling steel



- Materials: SPCC cold rolling steel

Fixed Shelf

Model	Width	Depth	Description
RSP-080ST	510mm	450mm	80KG loading fixed shelf plate for 800mm depth cabinet
RSP-100ST	510mm	650mm	80KG loading fixed shelf plate for 1000mm depth cabinet
RSP-110ST	510mm	750mm	80KG loading fixed shelf plate for 1100mm depth cabinet
RSP-120ST	510mm	850mm	80KG loading fixed shelf plate for 1200mm depth cabinet
RHP-080ST	510mm	450mm	150KG loading fixed shelf plate for 800mm depth cabinet
RHP-100ST	510mm	650mm	150KG loading fixed shelf plate for 1000mm depth cabinet
RHP-110ST	510mm	750mm	150KG loading fixed shelf plate for 1100mm depth cabinet
RHP-120ST	510mm	850mm	150KG loading fixed shelf plate for 1200mm depth cabinet

Sliding Shelf

Model	Width	Depth	Description
RSS-080ST	510mm	450mm	50KG loading sliding shelf plate for 800mm depth cabinet
RSS-100ST	510mm	650mm	50KG loading sliding shelf plate for 1000mm depth cabinet
RSS-110ST	510mm	750mm	50KG loading sliding shelf plate for 1100mm depth cabinet

Keyboard Mouse Plate

Model	Width	Depth	Description
RKP-080ST	510mm	570mm	50KG loading keyboard mouse plate for 800mm depth cabinet
RKP-100ST	510mm	750mm	50KG loading keyboard mouse plate for 1000mm depth cabinet
RKP-110ST	510mm	950mm	50KG loading keyboard mouse plate for 1100mm depth cabinet

AC Fan

Model	Fan Unit	Description
RFN-04T	4	Top fan tray for server cabinet

L Guide Rail

Model	Length	Description
RLG-080ST	450mm	Suitable for 800mm depth cabinet
RLG-100ST	550mm	Suitable for 1000mm depth cabinet
RLG-110ST	750mm	Suitable for 1100mm depth cabinet
RLG-120ST	850mm	Suitable for 1200mm depth cabinet

Cable Manager (Vertical)

Model	Height	Width	Depth	Description
RMV-42ST	42U	95mm	80mm	Cable management for server cabinet

SPECIFICATIONS SUBJECT TO CHANGE WITHOUT NOTICE.

Accessories

for All Series Rack Cabinet



- Use for supporting equipment
- Materials: SPCC cold rolling steel



- 19" Drawer with lock and key
- Materials: SPCC cold rolling steel



- Use for blocking the airflow and aesthetic
- Materials: SPCC cold rolling steel



- Use for blocking the airflow and aesthetic
- Materials: SPCC cold rolling steel



- Materials: SPCC cold rolling steel



- Materials: SPCC cold rolling steel



- Materials: SPCC cold rolling steel (Light holder)



- Security lock



- Materials: Nickel Galvanized

Cantilever Shelf Plate

Model	Height	Width	Depth	Description
RCP-1U350	1U	19" Mounting	350mm	20kg loading cantilever shelf plate
RCP-2U350	2U	19" Mounting	350mm	25kg loading cantilever shelf plate
RCP-1U550	1U	19" Mounting	550mm	20kg loading cantilever shelf plate
RCP-2U550	2U	19" Mounting	550mm	25kg loading cantilever shelf plate

Drawer

Model	Height	Width	Depth	Description
RDR-2U	2U	19" Mounting	360mm	2U Drawer
RDR-3U	3U	19" Mounting	360mm	3U Drawer
RDR-4U	4U	19" Mounting	360mm	4U Drawer

Blank Plate

Model	Height	Width	Description
RBP-1U	1U	19" Mounting	1U Blanking panel
RBP-2U	2U	19" Mounting	2U Blanking panel
RBP-3U	3U	19" Mounting	3U Blanking panel
RBP-4U	4U	19" Mounting	4U Blanking panel

Brush Plate

Model	Height	Width	Description
RBB-1U	1U	19" Mounting	1U Brush panel

Cable Manager (Horizontal)

Model	Height	Width	Depth	Description
RMH-1U	1U	19" Mounting	68mm	1U Cable management
RMH-2U	2U	19" Mounting	68mm	2U Cable management

Cable Manager (Shunting Rail)

Model	Height	Width	Description
RSR-1U	1U	19" Mounting	1U Shunting Rail

1U Light Holder

Model	Height	Voltage	Description
RLP-300	1U	220V	300mm Energy-saving lamps

Lock

Model	Description
RDL-01	Rack side panel flat circular lock w/key (for side panel)
RDL-02	Front door flat circular handles lock w/key (for glass front door)

Screw and Nut

Model	Description
RSN-M6	M6 square nut + M6 x12 cross cap bolts

SPECIFICATIONS SUBJECT TO CHANGE WITHOUT NOTICE.