



# Standard Series

---



STATIC LOADING CAPACITY

**300KG**

# Standard Series



## Standard

- Comply with ANSI/EIA RS-310-D; IEC297-2; DIN41491: PART 1; DIN41491: PART 7; GB/T3047.2-92 standard, compatible with 19" international standard, metric system and ETSI standard

## Features

- Reliable structure, static loading capacity: 300KG
- Adjustable feet and castors are available
- Tempered glass front door and steel real panel
- Top and bottom cable entries
- Front door, real door and side panel can be easily removed
- Optional accessories

## Materials

- SPCC cold rolling steel
- Mounting profile thickness: 1.5mm ; Others: 0.8mm



Adjustable mounting rail and spacer



Front door with security lock



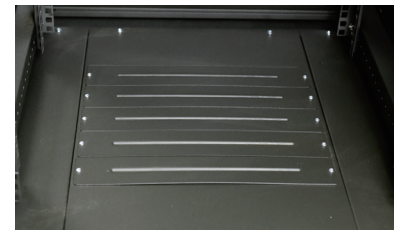
Top ventilation with brush plate for cables management



Grounded terminal



Fan unit for efficient heat dissipation



The bottom strips can be disassembled for easy cable management

SPECIFICATIONS SUBJECT TO CHANGE WITHOUT NOTICE.

**EIGHT LIMITED**

No.18, 4/F, Thriving Industrial Centre, 26-38 Sha Tsui Road, Tsuen Wan, N.T., Hong Kong TEL : (852) 2413 2222 FAX : (852) 2411 3000 EMAIL : info@eightgroup.com

# Standard Series



Glass Door



Mesh Door



Side Panel



Steel Real Panel

## Standard Rack Cabinet

Model	Capacity (U)	Width (mm)	Depth (mm)	Height (mm)	Approx Weight (KG)
1266C	12	600	600	737	27
1268C	12	600	800	737	37
1566C	15	600	600	870	30
1568C	15	600	800	870	40
2166C	21	600	600	1140	45
2168C	21	600	800	1140	55
2766C	27	600	600	1407	51
2768C	27	600	800	1407	61
3166C	31	600	600	1585	56
3168C	31	600	800	1585	67
3666C	36	600	600	1807	61
3668C	36	600	800	1807	73
4166C	41	600	600	2029	66
4168C	41	600	800	2029	78

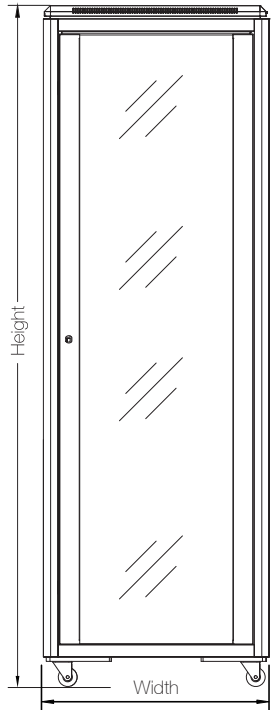
\*Height Include Castor

SPECIFICATIONS SUBJECT TO CHANGE WITHOUT NOTICE.

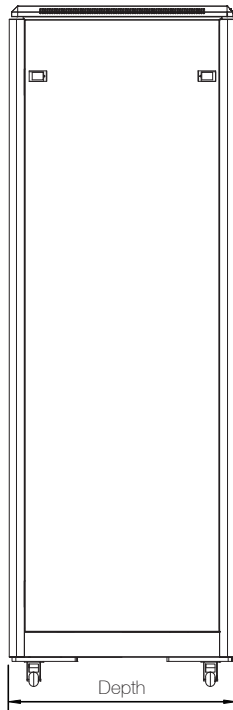
**EIGHT LIMITED**

No.18, 4/F, Thriving Industrial Centre, 26-38 Sha Tsui Road, Tsuen Wan, N.T., Hong Kong TEL : (852) 2413 2222 FAX : (852) 2411 3000 EMAIL : info@eightgroup.com

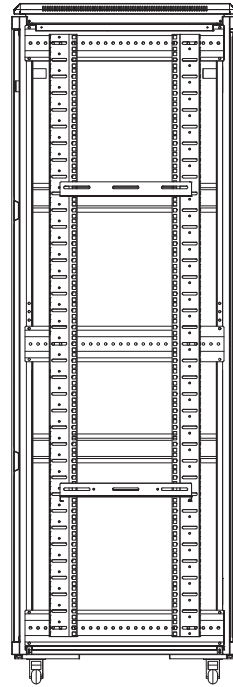
# Dimensions



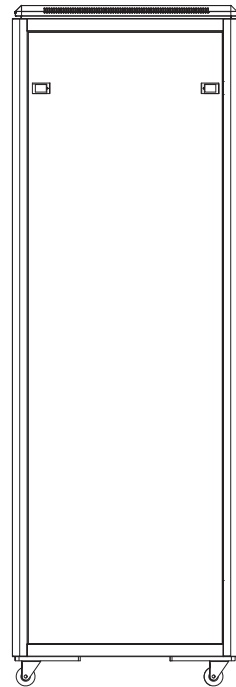
FRONT VIEW



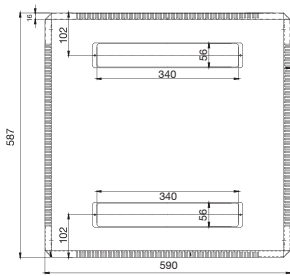
SIDE VIEW



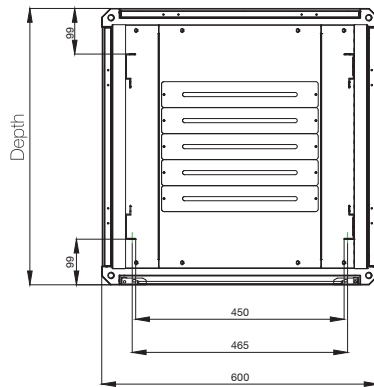
INNER STRUCTURE



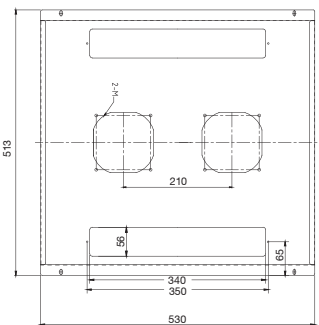
BACK VIEW



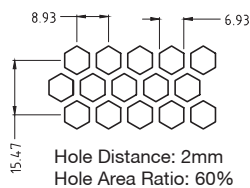
TOP



BOTTOM



TOP WITH FAN



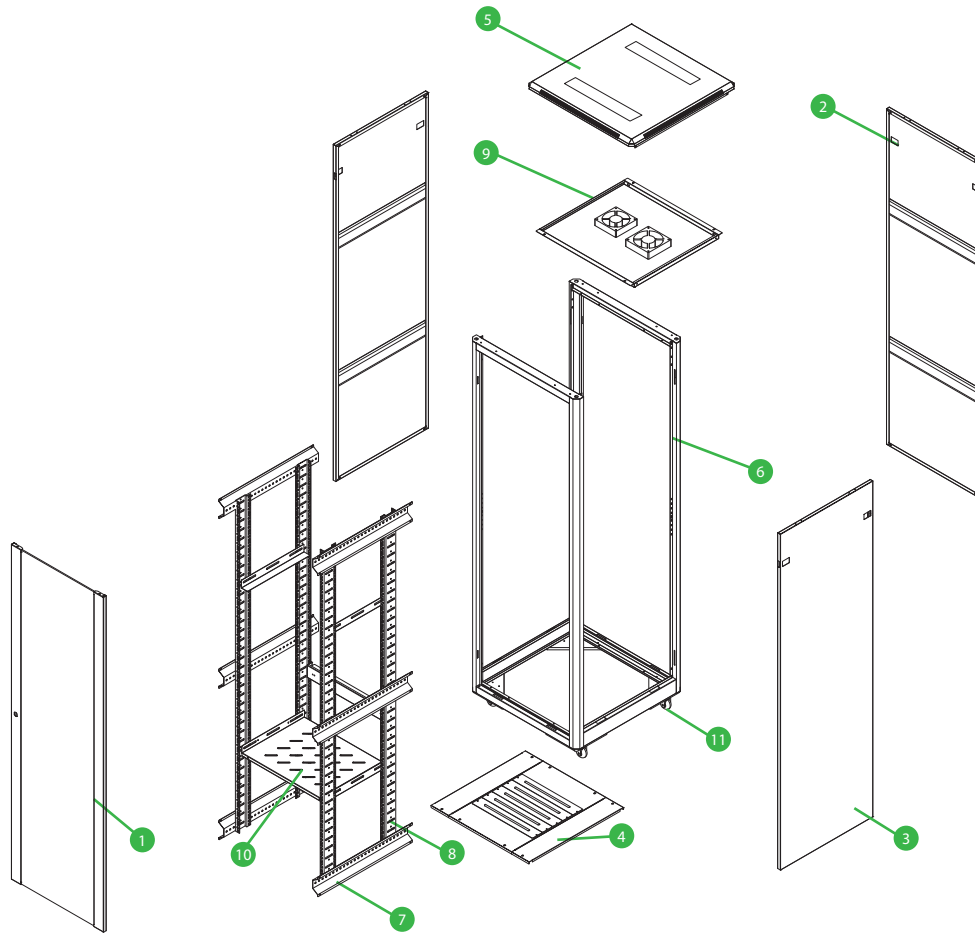
VENTED HOLES

SPECIFICATIONS SUBJECT TO CHANGE WITHOUT NOTICE.

**EIGHT LIMITED**

No.18, 4/F., Thriving Industrial Centre, 26-38 Sha Tsui Road, Tsuen Wan, N.T., Hong Kong TEL : (852) 2413 2222 FAX : (852) 2411 3000 EMAIL : info@eightgroup.com

# Structure Diagrams



Standard Rack Cabinet					
Number	Name of Parts	Quantity	Unit	Remark	
1	Front door	1	Piece	---	
2	Rear Door	1	Piece	SPCC cold rolling steel	
3	Side Panel	2	Piece	SPCC cold rolling steel	
4	Bottom	1	Piece	SPCC cold rolling steel	
5	Top Cover	1	Piece	SPCC cold rolling steel	
6	Frame	1	Piece	SPCC cold rolling steel	
7	Mounting Profile	4	Piece	SPCC cold rolling steel	
8	Mounting Angle	6	Piece	SPCC cold rolling steel	
9	Fan	2	Piece	---	
10	Shelf	1	Piece	SPCC cold rolling steel	
11	Castor	1	Set	---	
12	Lock	1	Piece	Zinc alloy	
13	Key	2	Piece	---	
14	M6 Screw	20	Set	---	

SPECIFICATIONS SUBJECT TO CHANGE WITHOUT NOTICE.